

WL series

**FILTERING CARTRIDGE
WIRE MESH - CLEANABLE
OD 3.74"-4.72" (95-120 mm)**



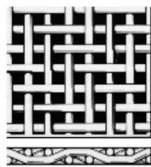
FEATURES:

- High flow-rate
- High mechanical strength
- High temperature resistance
- Excellent chemical compatibility
- Pleated construction
- Support drain mesh construction to prevent pleat collapse
- Cleanable
- No media migration
- Filtration direction from outside to inside
- Three types available
- Two construction materials available
- Two assembly technologies available
- Suitable for both liquid and gas filtration
- 1935/2004/CE certification available upon request (*only WLHP*)
- Filtration rating from 5 to 1000 µm

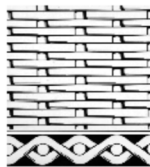
ADOPTED MESH:



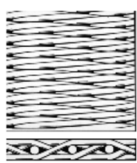
Square mesh



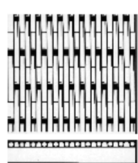
Twilled woven cloth



Reps



Touraille



Vertical Touraille



Brochure no.: 022-WL-22-UK-4

MAIN APPLICATIONS:

- DESALINATION
- WATER TREATMENT
- FINE CHEMICALS
- PETROCHEMICAL
- OIL & GAS
- FOOD & BEVERAGE
- POWER GENERATION
- PAINTS AND RESINS
- PHARMACEUTICAL
- HYDRAULIC
- STEEL MILL
- GENERAL INDUSTRY

ASCO FILTRI

a **mott** company

ASCO Filtri S.p.A.

Viale delle Scienze, 8

20082 Binasco (MI) - Italy

Phone: +39 02 89703.1

Fax: +39 02 89703.410

E-mail: info@ascofiltri.com

Web: www.ascofiltri.com

WL series

FILTERING CARTRIDGE
WIRE MESH - CLEANABLE
OD 3.74"-4.72" (95-120 mm)

TECHNICAL DATA

DIFFERENTIAL PRESSURE

Cartridge replacement:

2.0 bar @ 25 °C

Max. allowable:

3 bar @ 25 °C (epoxy glued)

8 bar @ 360 °C (welded)

MAX. WORKING TEMPERATURE

120 °C (epoxy glued)

360 °C (welded)

CONSTRUCTION MATERIALS

Filter media / hardware:

- 304 SS

- 316 SS

Gaskets:

- Buna-n (max. 120 °C)

- EPDM (max. 120 °C)

- Viton (max. 230 °C)

- Silicone (max. 230 °C)

- PTFE (max. 250 °C)

- KlingerSil (max. 360 °C)

DIMENSIONI

Type 2:

OD 70 - ID 40 mm

Type 3:

OD 95 - ID 52 mm

Type 4:

OD 120 - ID 80 mm

Length:

350, 500, 750, 1000 mm

FILTERING AREA

210: 0.20 m²

220: 0.40 m²

230: 0.60 m²

240: 0.80 m²

313: 0.30 m²

320: 0.43 m²

330: 0.60 m²

340: 0.86 m²

413: 0.40 m²

420: 0.57 m²

430: 0.80 m²

440: 1.04 m²

Flow-rate / Delta-P data:

Filtration (µm)	Size 210		Size 220		Size 230		Size 240	
	Water	Air	Water	Air	Water	Air	Water	Air
	1 cP	0.018 cP	1 cP	0.018 cP	1 cP	0.018 cP	1 cP	0.018 cP
10	2.1	25	4.2	50	5.7	75	7.6	100
25	3.1	35	6.2	70	9.0	105	12.0	120
45	3.3	40	6.6	80	9.9	120	12.5	120
75	3.5	40	7.0	80	10.5	120	12.5	120
100	3.5	45	7.0	90	10.5	120	12.5	120
150	3.5	50	7.0	100	10.5	120	12.5	120
≥ 250	3.5	50	7.0	100	10.5	120	12.5	120

Filtration (µm)	Size 313		Size 320		Size 330		Size 340	
	Water	Air	Water	Air	Water	Air	Water	Air
	1 cP	0.018 cP	1 cP	0.018 cP	1 cP	0.018 cP	1 cP	0.018 cP
10	3.1	75	4.7	110	7.0	170	9.3	200
25	5.0	75	7.4	110	11.1	170	14.8	200
45	7.0	90	10.0	130	15.0	200	20.0	200
75	8.0	100	11.1	150	16.7	200	22.0	200
100	9.0	100	12.8	150	19.2	200	23.0	200
150	10.0	100	14.2	150	21.3	200	23.0	200
≥ 250	13.5	100	19.2	150	23.0	200	23.0	200

Filtration (µm)	Size 413		Size 420		Size 430		Size 440	
	Water	Air	Water	Air	Water	Air	Water	Air
	1 cP	0.018 cP	1 cP	0.018 cP	1 cP	0.018 cP	1 cP	0.018 cP
10	4.1	115	5.9	170	9.0	260	12.0	350
25	6.0	115	8.6	170	12.9	260	17.2	350
45	9.0	130	12.9	190	19.4	290	26.0	390
75	10.0	150	14.2	220	21.3	330	28.4	440
100	11.0	180	15.7	260	23.6	390	21.0	440
150	13.0	200	18.6	300	27.9	450	37.2	460
≥ 250	17.0	200	24.2	300	36.3	450	48.4	460

Liquid flow-rate (m³/h) - Air flow-rate (Am³/h) - Clean Delta-P 0.1 bar

For gas different than air: DP = 0.1 x gas viscosity (cP) / 0.018 cP (air).

Flow-rate valid for clean water and air, reduce the flow-rate according to the application.

Contact us for any further information.

We reserve the right to change the data of this specification without notice.

ASCO Filtri S.p.A.

Viale delle Scienze, 8
20082 Binasco (MI) - Italy
Phone: +39 02 89703.1

Fax: +39 02 89703.410

E-mail: info@ascofiltri.com

Web: www.ascofiltri.com

ASCO
FILTRI
a **mott** company